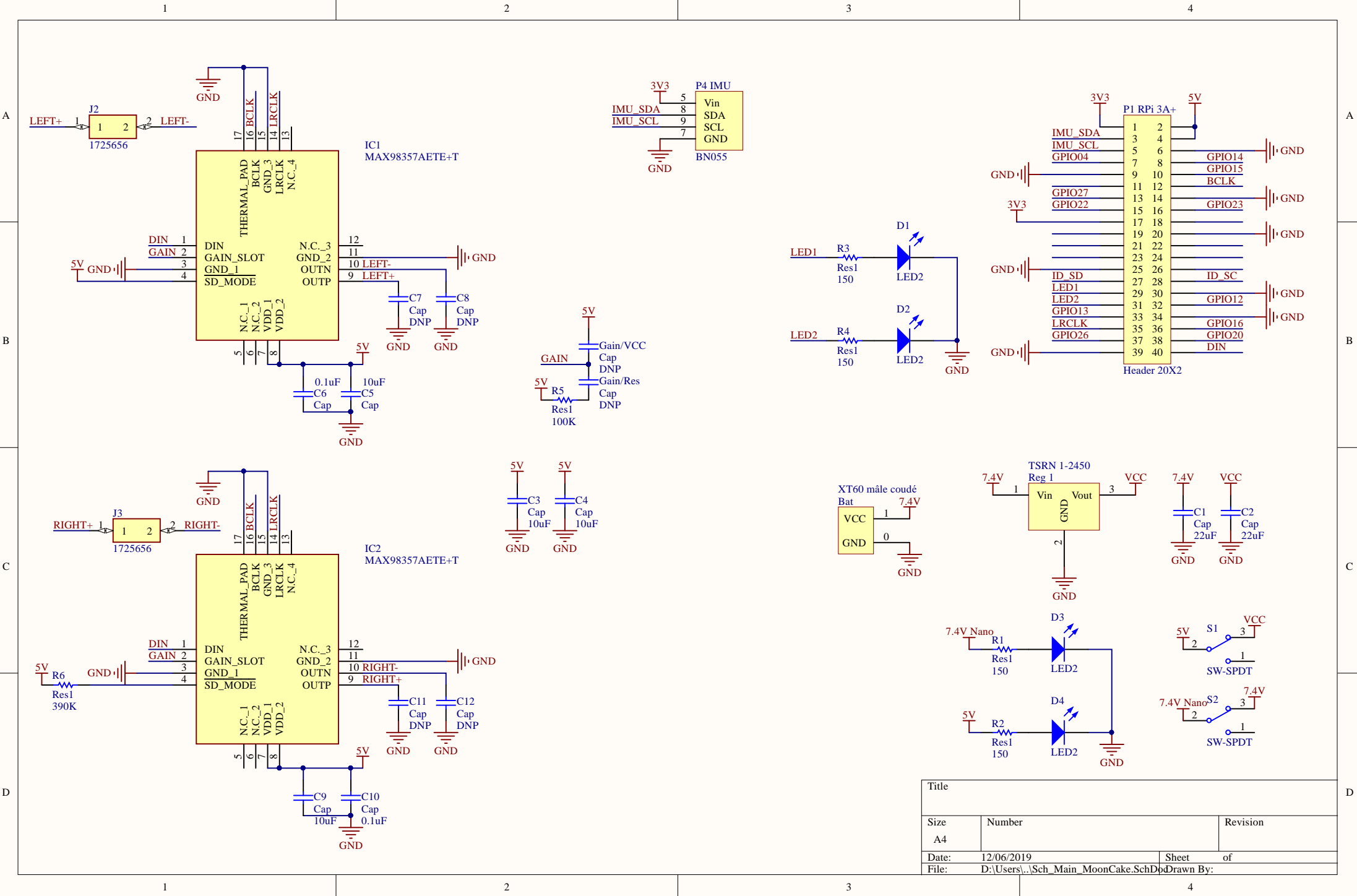
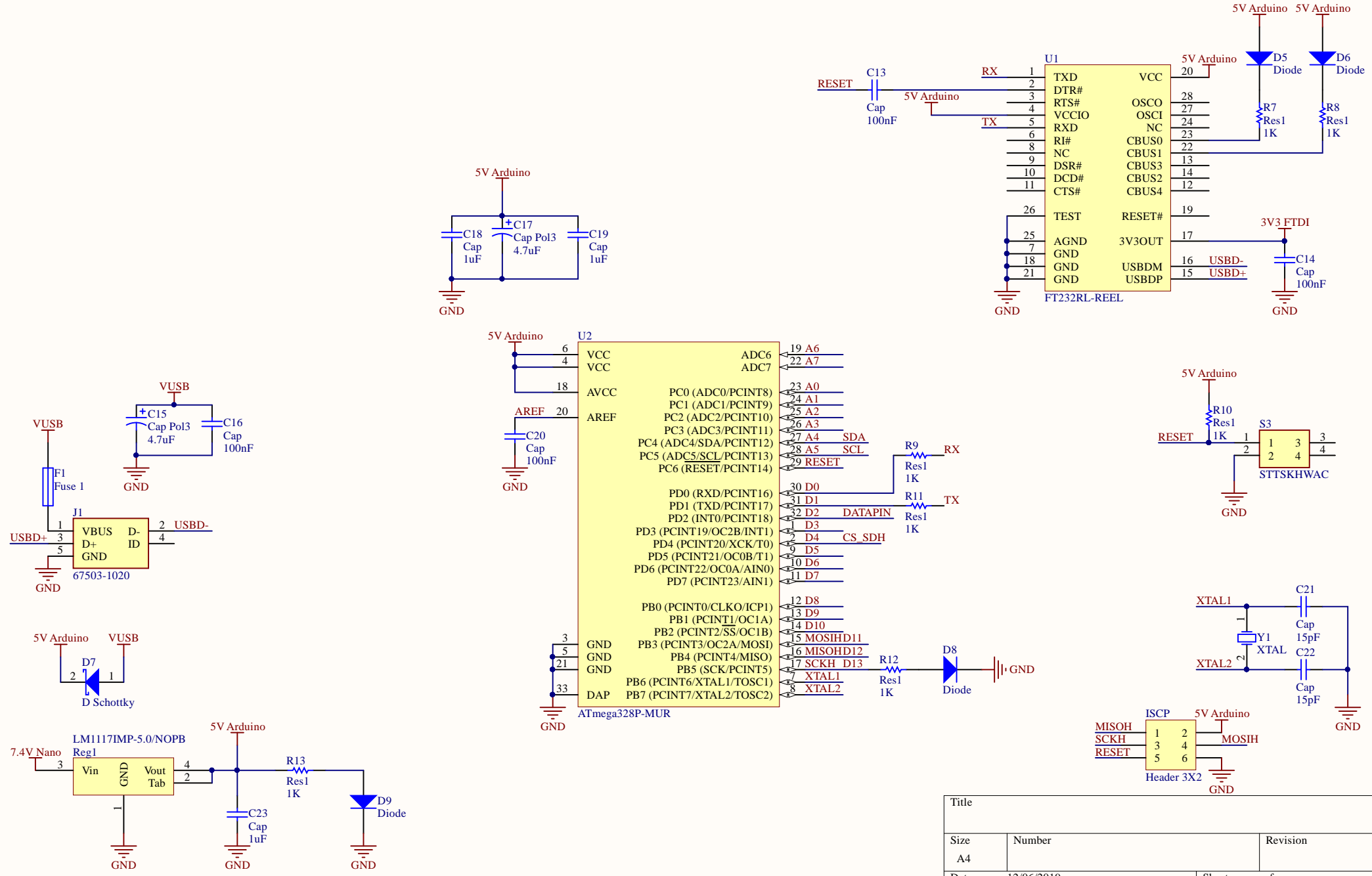


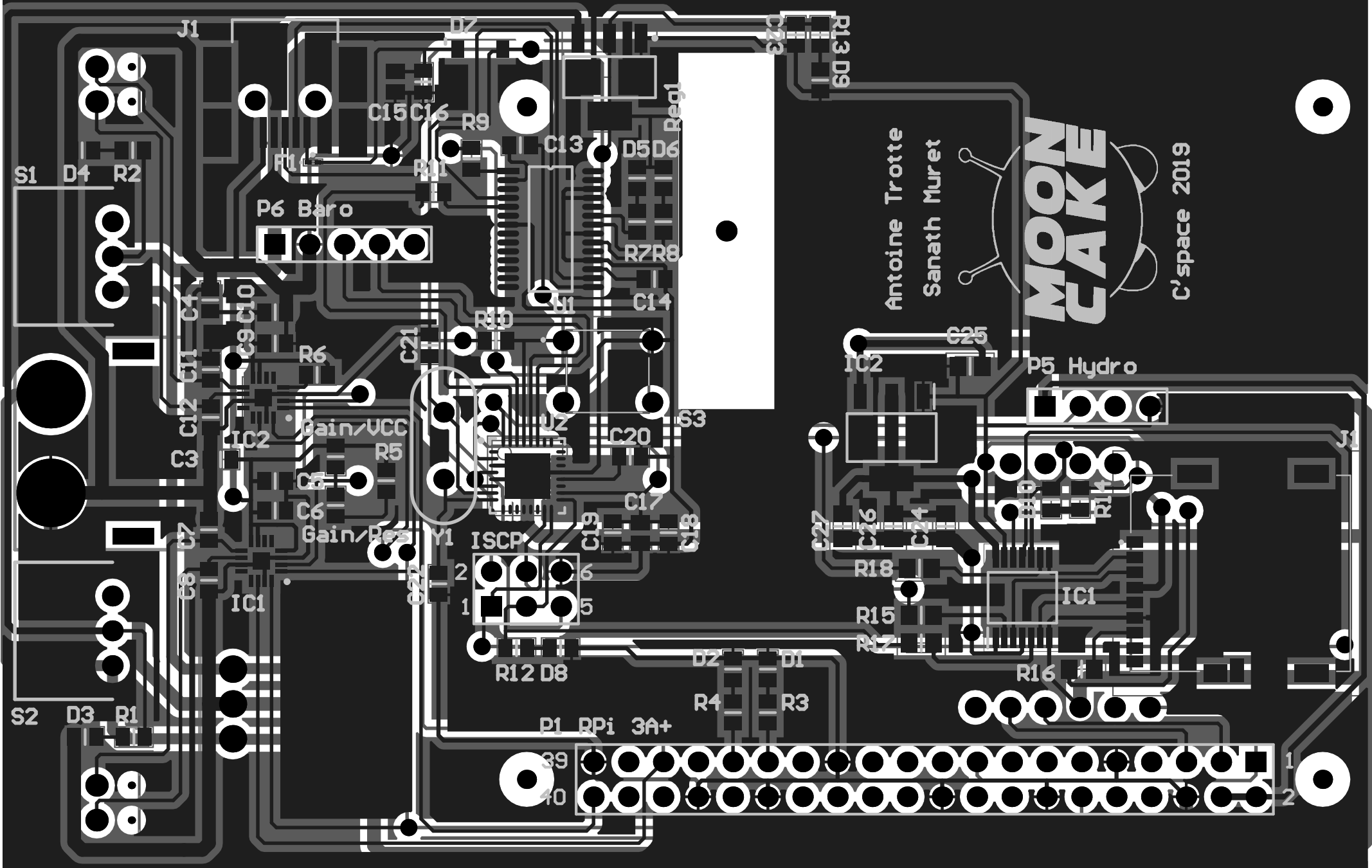
Title		
Size	Number	Revision
A4		
Date:	12/06/2019	Sheet of
File:	D:\Users\...\Sch_ExpNano_MoonCake.Sch Drawn By:	



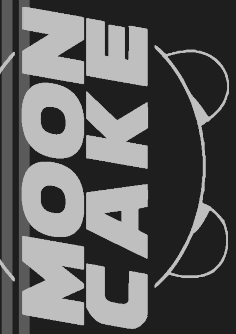
Title		
Size	Number	Revision
A4		
Date:	12/06/2019	Sheet of
File:	D:\Users\...\Sch_Main_MoonCake.SchDpDrawn By:	



Title		
Size	Number	Revision
A4		
Date:	12/06/2019	Sheet of
File:	D:\Users\...\Sch_Nano_MoonCake.SchDp Drawn By:	



Antoine Trotte
Sanath Muret



C'space 2019

Comment	Description	Designator	Footprint	LibRef	Quantity
XT60 mâle coudé		Bat	XT60-mâle	XT60 mâle coudé	1
Cap	Capacitor	C1	6-0805_L	Cap	1
Cap	Capacitor	C2	6-0805_L	Cap	1
Cap	Capacitor	C3	6-0805_L	Cap	1
Cap	Capacitor	C4	6-0805_L	Cap	1
Cap	Capacitor	C5	6-0805_L	Cap	1
Cap	Capacitor	C6	6-0805_L	Cap	1
Cap	Capacitor	C7	6-0805_L	Cap	1
Cap	Capacitor	C8	6-0805_L	Cap	1
Cap	Capacitor	C9	6-0805_L	Cap	1
Cap	Capacitor	C10	6-0805_L	Cap	1
Cap	Capacitor	C11	6-0805_L	Cap	1
Cap	Capacitor	C12	6-0805_L	Cap	1
Cap	Capacitor	C13	6-0805_L	Cap	1
Cap	Capacitor	C14	6-0805_L	Cap	1
Cap Pol3	Polarized Capacitor (S	C15	C0805	Cap Pol3	1
Cap	Capacitor	C16	6-0805_L	Cap	1
Cap Pol3	Polarized Capacitor (S	C17	C0805	Cap Pol3	1
Cap	Capacitor	C18	6-0805_L	Cap	1
Cap	Capacitor	C19	6-0805_L	Cap	1
Cap	Capacitor	C20	6-0805_L	Cap	1
Cap	Capacitor	C21	6-0805_L	Cap	1
Cap	Capacitor	C22	6-0805_L	Cap	1
Cap	Capacitor	C23	6-0805_L	Cap	1
Cap	Capacitor	C24	6-0805_N	Cap	1
Cap	Capacitor	C25	6-0805_N	Cap	1
Cap	Capacitor	C26	6-0805_N	Cap	1
Cap	Capacitor	C27	6-0805_N	Cap	1
LED2	Typical RED, GREEN,	D1	6-0805_L	LED2	1
LED2	Typical RED, GREEN,	D2	6-0805_L	LED2	1
LED2	Typical RED, GREEN,	D3	6-0805_L	LED2	1
LED2	Typical RED, GREEN,	D4	6-0805_L	LED2	1
Diode	Default Diode	D5	6-0805_L	Diode	1
Diode	Default Diode	D6	6-0805_L	Diode	1
D Schottky	Schottky Diode	D7	MBR0520LT1G	D Schottky	1
Diode	Default Diode	D8	6-0805_L	Diode	1
Diode	Default Diode	D9	6-0805_L	Diode	1
LED2	Typical RED, GREEN,	D10	6-0805_L	LED2	1
Fuse 1	Fuse	F1	603	Fuse 1	1
Cap	Capacitor	Gain/Res	6-0805_L	Cap	1
Cap	Capacitor	Gain/VCC	6-0805_L	Cap	1
74ABT125PW_112	Integrated Circuit	IC1	SOP65P640X110-14N	74ABT125PW_112	1
MAX98357AETE+T	Integrated Circuit	IC1	QFN50P300X300X80	MAX98357AETE+T	1
AZ1117CH-3.3TRG1	Integrated Circuit	IC2	SOT230P700X180-4N	AZ1117CH-3.3TRG1	1
MAX98357AETE+T	Integrated Circuit	IC2	QFN50P300X300X80	MAX98357AETE+T	1
Header 3X2	Header, 3-Pin, Dual r	ICP	HDR2X3	Header 3X2	1
67503-1020	Connector	J1	67503-1020	67503-1020	1
045138008100858+	Connector	J1	4,5138E+13	045138008100858+	1
1725656	Connector	J2	1725656	1725656	1
1725656	Connector	J3	1725656	1725656	1
Header 20X2	Header, 20-Pin, Dual	P1 RPI 3A+	HDR2X20	Header 20X2	1
BN055		P4 IMU	BN0055 adafruit	BN055	1
Header 4	Header, 4-Pin	P5 Hydro	HDR1X4	Header 4	1
Header 5	Header, 5-Pin	P6 Baro	HDR1X5	Header 5	1
Res1	Resistor	R1	6-0805_L	Res1	1
Res1	Resistor	R2	6-0805_L	Res1	1
Res1	Resistor	R3	6-0805_L	Res1	1
Res1	Resistor	R4	6-0805_L	Res1	1
Res1	Resistor	R5	6-0805_L	Res1	1
Res1	Resistor	R6	6-0805_L	Res1	1
Res1	Resistor	R7	6-0805_L	Res1	1
Res1	Resistor	R8	6-0805_L	Res1	1
Res1	Resistor	R9	6-0805_L	Res1	1
Res1	Resistor	R10	6-0805_L	Res1	1
Res1	Resistor	R11	6-0805_L	Res1	1
Res1	Resistor	R12	6-0805_L	Res1	1
Res1	Resistor	R13	6-0805_L	Res1	1
Res1	Resistor	R14	6-0805_L	Res1	1
Res1	Resistor	R15	6-0805_N	Res1	1
Res1	Resistor	R16	6-0805_N	Res1	1
Res1	Resistor	R17	6-0805_N	Res1	1
Res1	Resistor	R18	6-0805_N	Res1	1
LM1117IMP-5.0/NOPB		Reg1	SOT223_L	LM1117IMP-5.0/NOPB	1
TSRN 1-2450	Tracopower 7.4 to 5V	Reg 1	TSRN 1-2450	Tracopower 7.4V to 5	1
SW-SPDT	SPDT Subminiature T	S1	DIP coude	SW-SPDT	1
SW-SPDT	SPDT Subminiature T	S2	DIP coude	SW-SPDT	1
STTSKHWAC	Switch	S3	STTSKHHAR	STTSKHWAC	1
FT232RL-REEL		U1	FT232RL-REEL	FT232RL-REEL	1
ATmega328P-MUR	8-bit AVR Microcontr	U2	32M1-A_L	ATmega328P-MUR	1
XTAL	Crystal Oscillator	Y1	Quartz 16MHz	XTAL	1